

WEEKLY ENGLISH PRACTICE

Island Life, Irish Style

Living on secluded Irish islands is a mix of calmness, wild beauty, and a strong bond with nature.



These faraway islands along the Atlantic coast are different from the busy life on the mainland. People here rely on each other in a **close-knit** community because the surroundings can be tough.

People on these islands live closely with nature. The strong waves hitting the rocky shores, the high cliffs, and the green hills are not just pretty views but are a big part of daily life. Islanders know the **tides**, the seasons, and the changing weather well. This close connection to nature makes them appreciate the simple life and respect the natural forces around them.

Even though the islands are beautiful, life here has its challenges. There are not many **resources** like hospitals, schools, or even basic things. Transportation, often by small boats or occasional ferries, can be tricky because of the unpredictable weather. But people on the islands are strong. They depend on each other and the community to face these challenges.

The culture on these islands is deeply Irish, keeping old traditions alive. Customs, stories, and language are important and show the history and strength of these communities.

Festivals and events bring people together, celebrating their unique island life.

In a time when everything is moving quickly, life on these Irish islands shows that communities can survive and enjoy the simple and beautiful things, even in a **challenging** environment. It's a life that may be hard, but it's also rich and fulfilling, where simplicity, community, and nature come together in a special way.

There are numerous **secluded** islands along the Irish coast, each with its own unique charm. Here are some of the well-known secluded Irish islands:

1. Achill Island: The largest island off the coast of Ireland, located in County Mayo.
2. Inishmore, Inishmaan, and Inisheer (Aran Islands): A group of islands off the west coast of Ireland, known for their rich cultural heritage.
3. Skellig Michael: Famous for its ancient monastic settlement, situated off the coast of County Kerry.
4. Rathlin Island: Situated off the coast of County Antrim in Northern Ireland, it is the only inhabited offshore island in the region.
5. Dursey Island: The westernmost of the inhabited Irish islands, connected to the mainland by Ireland's only **cable car**.



by ECP coach

Jarrod Olman

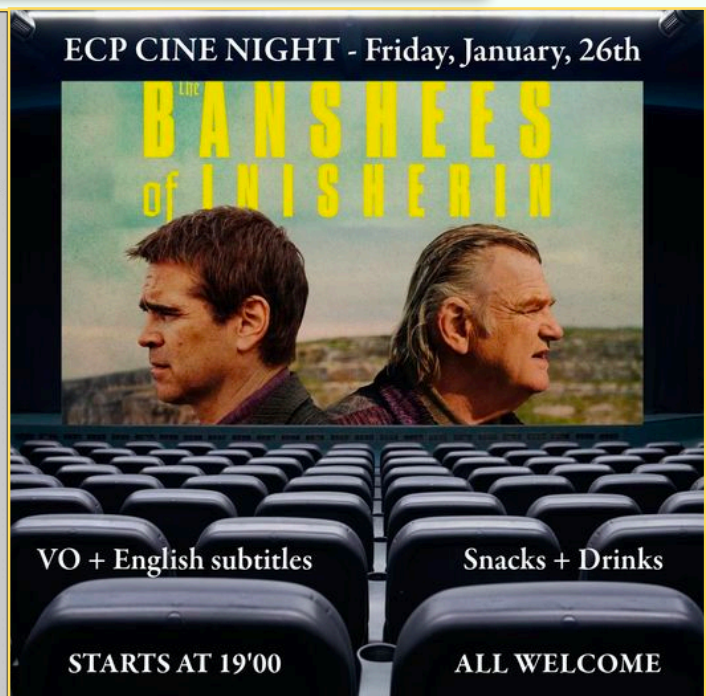
Word list

1. **Close-knit:** is characterized by strong interpersonal bonds, mutual support, and a sense of togetherness among its members.
2. **Tides:** refer to the periodic rise and fall of the Earth's oceans and seas caused primarily by the gravitational forces exerted by the moon and the sun.
3. **Resources:** Resources are the raw materials, assets, or commodities available in an environment that can be utilized to meet human needs.
4. **Festivals:** Festivals are communal celebrations or events, often rooted in cultural or religious traditions.
5. **Challenging:** something requiring considerable effort and determination to overcome, often testing one's abilities, skills, or endurance.
6. **Secluded:** hidden, private, or isolated, offering a sense of seclusion and solitude.
7. **Cable car:** A cable car is a transportation system in which cabins or gondolas are suspended from a cable

Let's chat about that!

1. What do you think about the idea of living on secluded Irish islands, as described in the article?
2. The article talks about the deep connection to nature that islanders have. How important do you think it is for people to be closely connected to the natural environment in their daily lives?
3. What aspects of island life would be most difficult for you?
4. Do you think it is important for communities to hold on to their traditions?
5. How does community play a role in your life?

COINCIDENTALLY, YOU ARE INVITED TO COME AND WATCH A FANTASTIC FILM THAT IS SET ON A SECLUDED IRISH ISLAND, THIS FRIDAY AT 19.00



CLICK [HERE](#) FOR FREE SOCIAL EVENTS IN ENGLISH!